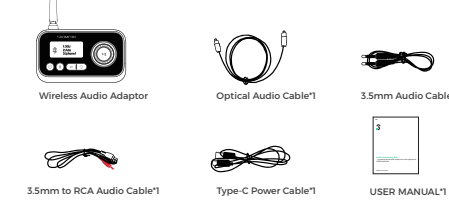




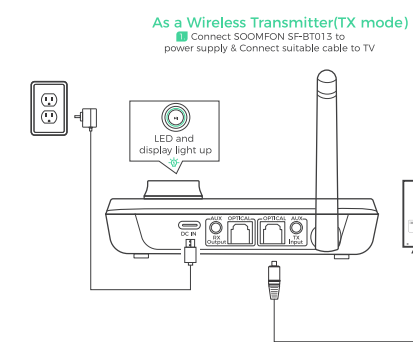
Audio Streaming Box
- a multifunctional audio adaptor for home appliances
USER MANUAL

Model: BT17

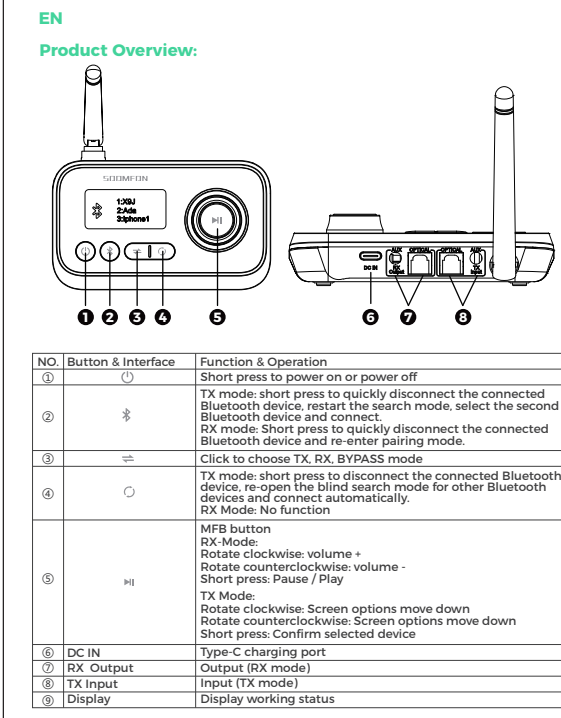
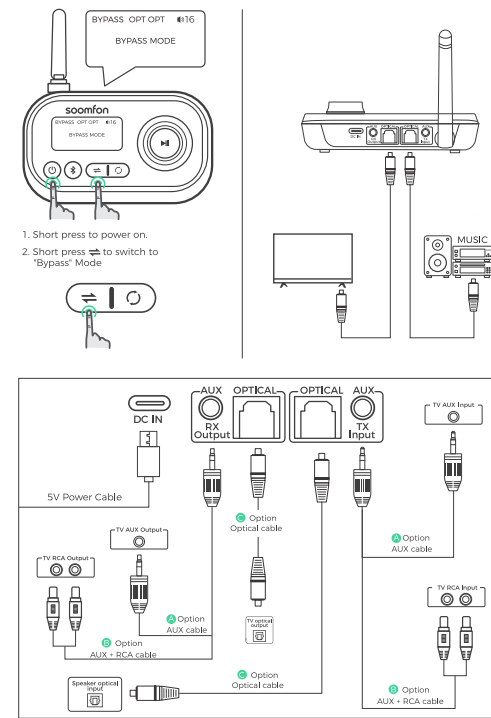
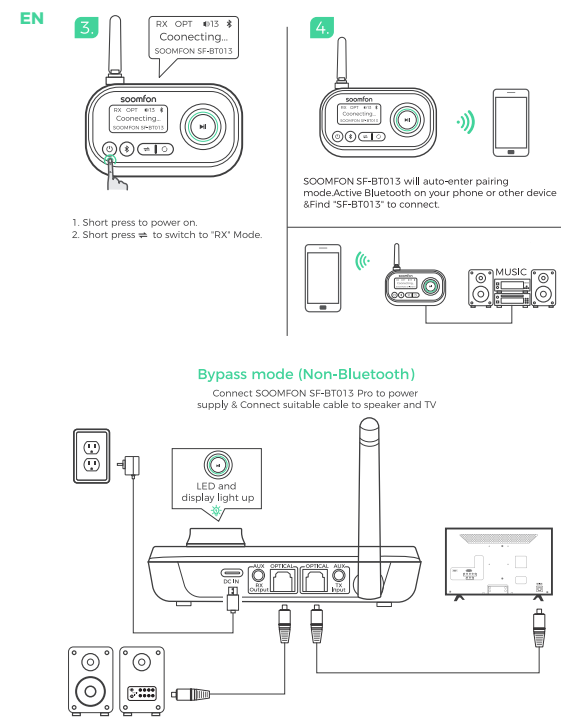
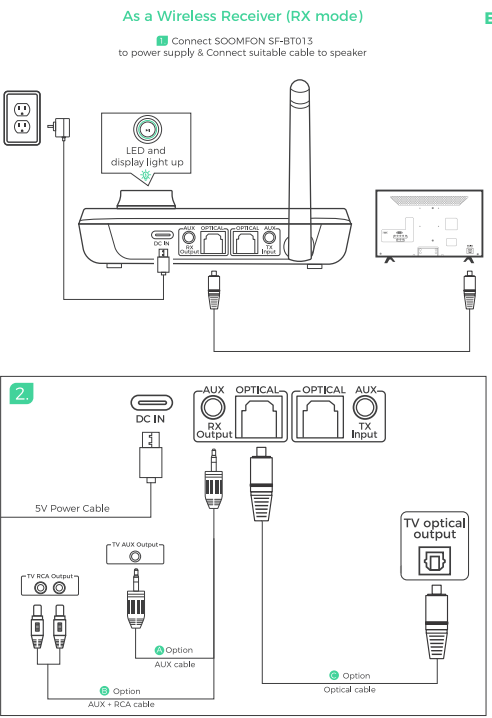
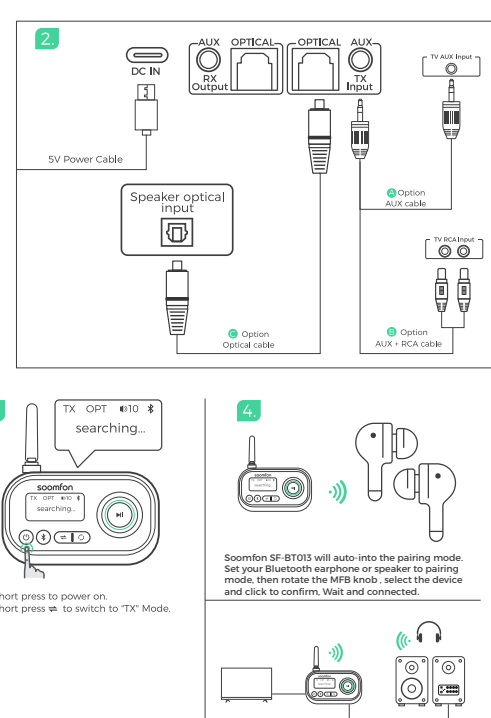
Packing Content:



How does it work?



EN



No.	Button & Interface	Function & Operation
1	Power	Short press to power on or power off
2	TX Mode	TX mode short press to quickly disconnect the connected Bluetooth device, repeat the search mode, select the second Bluetooth device and quickly disconnect the connected Bluetooth device and re-enter pairing mode
3	ByPass Mode	By mode short press to quickly disconnect the connected Bluetooth device and re-enter pairing mode
4	TX Mode	TX mode short press to disconnect the connected Bluetooth device, re-open the blind search mode for other Bluetooth devices and connect automatically
5	MFB Button	TX Mode: Rotate counter-clockwise: volume + Rotate clockwise: volume - Short press: Home / Play
6	TX Mode	Rotate counter-clockwise: Screen options move down Short press: Confirm selected device
7	Type-C charging port	Type-C charging port
8	TX Output	Output (RX mode)
9	TX Input	Input (TX mode)
10	Display	Display working status

Quick User Guide
As a Wireless Transmitter (TX Mode)
1) Connect audio source (TV, DVD etc.) to 'soomfon SF-BT013' from TV port with the audio cables provided (optical or AUX/RCA).
2) Connect 'soomfon SF-BT013' to power source (TV, PC USB socket or power adapter) with USB cable.
3) 'soomfon SF-BT013' automatically boots after power on or short press power button to power on.
4) Click button to choose the 'TX' mode, the display shows 'searching...'.
5) Pair 'soomfon SF-BT013' with your Bluetooth-enabled headsets/speakers:
1. Set your headsets/speakers to pairing mode;
2. Then the searched bluetooth device name will be shown on the display.
3. Rotate the MFB knob to select the device and click to confirm, wait and connected.
6) Pairing the second Bluetooth-enabled headsets/speakers: Click button to quickly disconnect the connected Bluetooth device, restart the search mode, then Repeat '5' step or Click button to disconnect the connected Bluetooth device, re-open the blind search mode for other Bluetooth devices and connect automatically.

As a Wireless Receiver (RX mode)
1) Connect your speaker to 'soomfon SF-BT013' to 'RX output' port with the audio cable provided (optical or AUX/RCA).
2) Connect 'soomfon SF-BT013' to power source with USB cable and adapter.
3) Connect the power to automatically turn on or short click button to power on.
4) Click button to choose the 'RX' mode, the display shows 'connecting...'.
5) Pair 'soomfon SF-BT013' with your Bluetooth-enabled phone/pc/tablet.
1) Active Bluetooth on your phone or other device to find 'SOOMFON SF-BT013' to connect.
2) Wait and connected.
3) Pair 'soomfon SF-BT013' with the second Bluetooth-enabled phone/pc/tablet.
Repeat '5' step
Bypass mode (Non-Bluetooth mode)
1) Connect audio source (TV, DVD etc.) to 'SOOMFON SF-BT013' 'TX Input' port with the audio cables provided (optical or AUX/RCA).
2) Connect your speaker to 'SOOMFON SF-BT013' 'Output' port with your own audio cable (optical or AUX/RCA).

3) Connect 'SOOMFON SF-BT013' to power source with USB cable and adapter.
4) Connect the power to automatically turn on or short click button to power on.
5) Click button to the 'Bypass' mode, the display shows 'Bypass Mode'.
6) Ready for use. Important Notice:
1. Make sure your(TV) output is valid. AUX test with earphones.
2. Does NOT support Dolby/DTS under OPT.
3. Bypass can only work with the same type of input / output i.e. AUX input to AUX output or OPT input to OPT output.
Trouble shooting
1) I am having trouble pairing and connecting to my Bluetooth device.
Please check the following:
1. Your wireless device supports the wireless profiles listed in the specifications.
2. 'SOOMFON SF-BT013' and your device are next to each other or within 3 feet/1 meter.
3. Make sure both 'SOOMFON SF-BT013' and the wireless device are in pairing mode.
4. When SOOMFON SF-BT013 and cell phone wireless pairing reboot, please confirm whether the use of the correct input power, the machine supports 5V DC power supply, please do

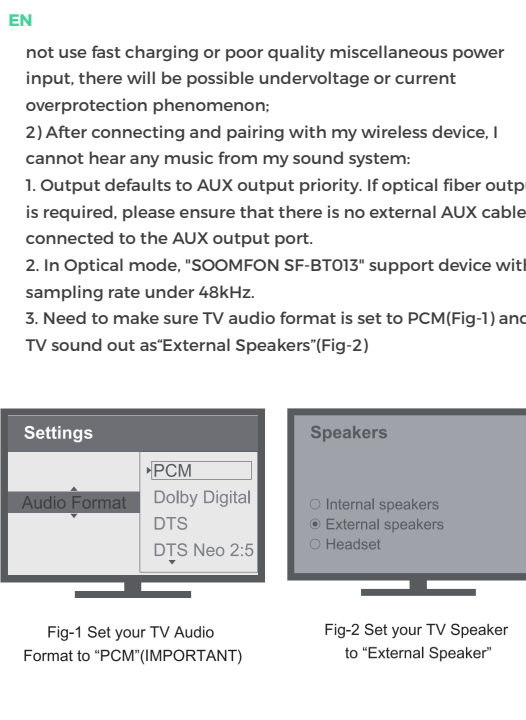


Fig 1 Set your TV Audio Format to 'PCM'(IMPORTANT)
Fig 2 Set your TV Speaker to 'External Speaker'

FCC Compliance Statement
This device complies with Part 15 of the FCC Rules. Operation is subject to the following two conditions:
(1) This device may not cause harmful interference.
(2) This device must accept any interference received, including interference that may cause undesired operation.
Warning: Changes or modifications not expressly approved by the party responsible for compliance could void the user's authority to operate the equipment.
Note: This equipment has been tested and found to comply with the limits for a Class B digital device, pursuant to Part 15 of the FCC Rules. These limits are designed to provide reasonable protection against harmful interference in a residential installation.
This equipment generates, uses, and can radiate radio frequency energy and, if not installed and used in accordance with the instructions, may cause harmful interference to radio communications. However, there is no guarantee that interference will not occur in a particular installation.
If this equipment does cause harmful interference to radio or television reception, which can be determined by turning the equipment off and on, the user is encouraged to try to correct the interference by one or more of the following measures:

• Reorient or relocate the receiving antenna.
• Increase the separation between the equipment and receiver.
• Connect the equipment into an outlet on a circuit different from that to which the receiver is connected.
• Consult the dealer or an experienced radio / TV technician for help.
IMPORTANT WEEE INFORMATION
This symbol on the product(s) and / or accompanying documents indicates that, under the new Directive 2012/19/EU on waste electrical and electronic equipment (WEEE), product(s) used electrical and electronic equipment (WEEE) should not be mixed with general household waste.
For proper treatment, recovery and recycling, please take this product(s) to designated collection points where it will be accepted free of charge.
Disposing of this product correctly will help save valuable resources and prevent any potential negative effects on human health and the environment, which could otherwise arise from inappropriate waste handling.

Please contact your local authority for further details of your nearest designated collection point.
Penalties may be applicable for incorrect disposal of this waste, in accordance with your national legislation.
For professional users in the European Union if you wish to discard electrical and electronic equipment (EEE), please contact your dealer or supplier for further information.
For disposal in countries outside of the European Union (EU), if you wish to discard this product, please contact your local authorities or dealer and ask for the correct method of disposal.
WARRANTY INFORMATION
A limited 2-year warranty applies to all Soomfon products purchased from Soomfon official store sellers. Please feel free to contact us if you run into any problems.